

Laboratory-based Virology Weekly Report

Week 13 ending 29 March 2026

The laboratory-based surveillance for influenza and common respiratory viruses is carried out all-year-around by the New Zealand virus laboratory network consisting of the WHO National Influenza Centre (NIC) at PHF Science and six hospital laboratories in Auckland (2), Waikato, Wellington, Christchurch and Dunedin. This laboratory network tests specimens ordered by clinicians for hospital inpatients and outpatients during normal clinical practice (serving ~70% of the New Zealand population). In addition, this laboratory network also conducts testing for public health surveillance, including SARI, ILI and WellKiwis (i.e. SHIVERS) cohort surveillance. Furthermore, some of untyped enteroviruses, adenoviruses and respiratory syncytial viruses are referred to PHF Science for further typing.

Caution is needed in the interpretation:

- 1) Sample collection is ordered by clinicians based on clinical judgement for patient management, rather than a systematic sampling approach for surveillance;
- 2) The number of laboratory tests can be influenced by testing priorities and demands, reagent and resource availability;
- 3) Testing technology and instruments evolve over the years which may have contributed to improved sensitivity for detection in recent years.

Tables and Figures below show the weekly influenza and common non-influenza viruses reported from the laboratory network in 2026. The latest information on COVID-19 cases is available on the Ministry of Health website [here](#)

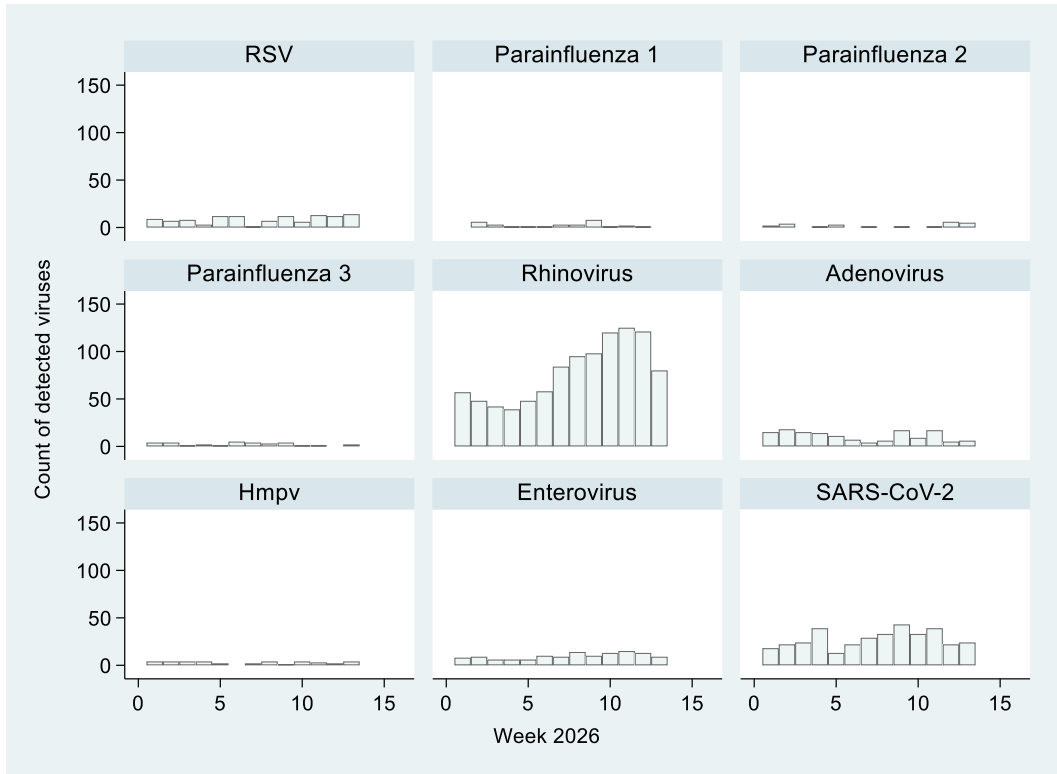
Table 1. Influenza respiratory viruses reported since 1 January 2026

<i>Influenza viruses</i>	Total
No. of positive specimens	260
Influenza A	162
A (not subtyped)	117
A Quadrivalent-Rapid Antigen Test (RAT)	3
A(H1N1)pdm09	17
A(H1N1)pdm09 by PCR	17
A/Missouri/11/2025 (H1N1)pdm09-like virus	0
A(H3N2)	28
A(H3N2) by PCR	28
A/Singapore/GP20238/2024 (H3N2)-like virus	0
Influenza B	98
B (lineage not determined)	97
B Quadrivalent-Rapid Antigen Test (RAT)	0
B/Yamagata lineage	0
B/Yamagata lineage by PCR	0
B/Phuket/3073/2013-like	0
B/Victoria lineage	1
B/Victoria lineage by PCR	1
B/Austria/1359417/2021-like	0

Table 2. Non-influenza respiratory viruses reported since 1 January 2026

<i>Non-influenza respiratory viruses</i>	Total
No. of positive viruses	1888
SARS-CoV-2	361
Respiratory syncytial virus (RSV)	116
Parainfluenza 1 (PIV1)	30
Parainfluenza 2 (PIV2)	24
Parainfluenza 3 (PIV3)	32
Rhinovirus (RV)	1015
Adenovirus (AdV)	144
Human metapneumovirus (hMPV)	38
Enterovirus	128

Figure 1. Non-influenza respiratory viruses reported since 1 January 2026, by week



Numbers for recent weeks are updated due to time lag in receiving laboratory test results.

Figure 2. Influenza viruses reported since 1 January 2026, by week

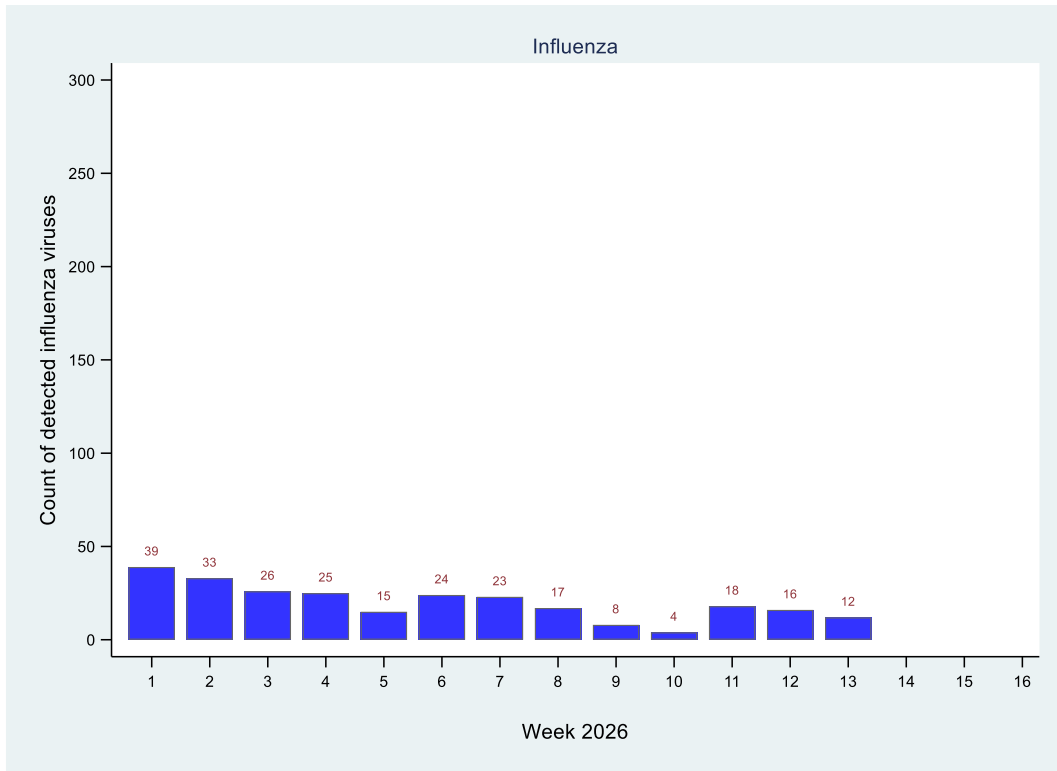


Table 3. Number of adenovirus types since 1 January 2026

<i>Adenovirus type</i>	Month											
	Jan	Feb	Mar	Apr	May	Jun	Jul	Aug	Sep	Oct	Nov	Dec
Adenovirus C												
Adenovirus type 1												
Adenovirus type 2												
Adenovirus type 4		1										
Adenovirus type 5												
Adenovirus type 7			1									
Adenovirus type 8												
Adenovirus type 37												
Adenovirus type 40												
Adenovirus type 41	3	2										

Table 4. Number of enterovirus types since 1 January 2026

<i>Enterovirus type</i>	Month											
	Jan	Feb	Mar	Apr	May	Jun	Jul	Aug	Sep	Oct	Nov	Dec
Coxsackie A virus type 4		1										
Coxsackie A virus type 6		2										
Coxsackie A virus type 8												
Coxsackie A virus type 9												
Coxsackie A virus type 10	1											
Coxsackie A virus type 16	3	1										
Coxsackie A virus type 21		1										
Echovirus type 11												
Echovirus type 16												
Echovirus type 18												
Echovirus type 30												
Enterovirus type 71												
Enterovirus type C105												
Human Rhinovirus		1										

Table 5. Number of respiratory syncytial virus types reported since 1 January 2026

<i>RSV type</i>	Month											
	Jan	Feb	Mar	Apr	May	Jun	Jul	Aug	Sep	Oct	Nov	Dec
RSV A	2		1									
RSV B	1	1	1									

This weekly report is compiled by PHF Science. For more information please contact:
 Tim Wood: T: +64 4 529 0611 E: Tim.Wood@phfscience.nz
 Sue Huang: T: +64 4 529 0606 E: Sue.Huang@phfscience.nz