

Development of an Integrated Drug Early Advisory System (IDEAS) to collate drug-related data in Aotearoa New Zealand

Wendy Popplewell, Olivia Johnson, Matthew Russell, Diana Kappatos,
Mary-Jane McCarthy

Health
Security



Forensics

Waste
Water

Drug
Chem

Clan
Labs

Tox

Pharma

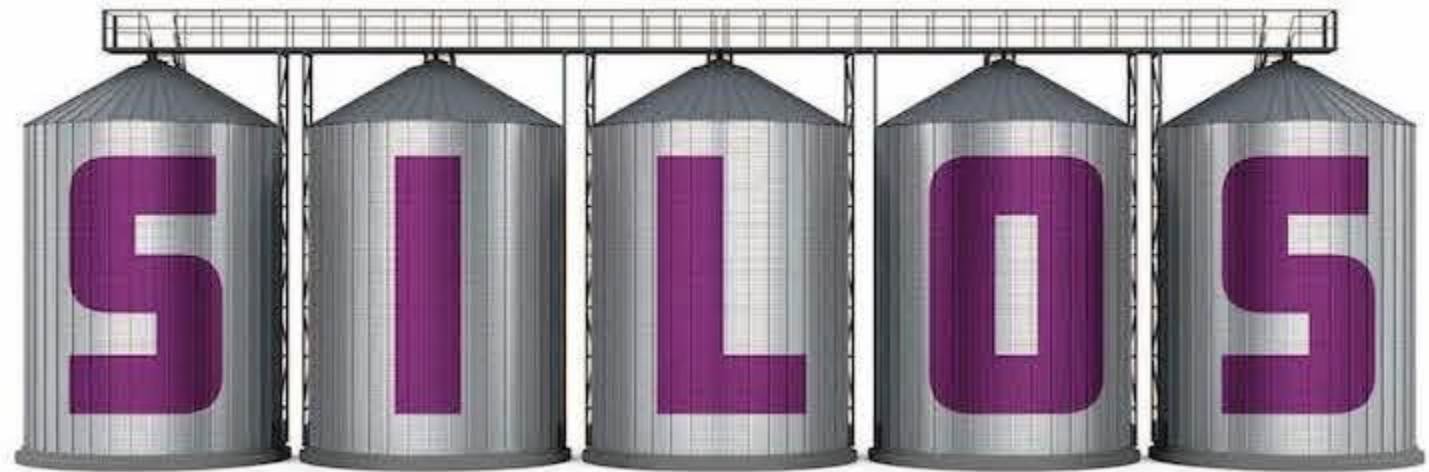
WDT

Border
Lab

IDEAS - Integrated Drug Early Advisory System



- Remove internal silos
- Integrate data streams
 - Alert
 - Monitor
 - Temporal spatial intelligence



IDEAS - Integrated Drug Early Advisory System



- SME + BI collaboration
 - System requirements
 - Data sources
 - Common language database
 - Key visualisations
 - Alert functionalities



- Goal
 - Unified, searchable repository of drugs data
 - Alert and visualisation tool supporting national drug harm reduction

Please note - Sandbox

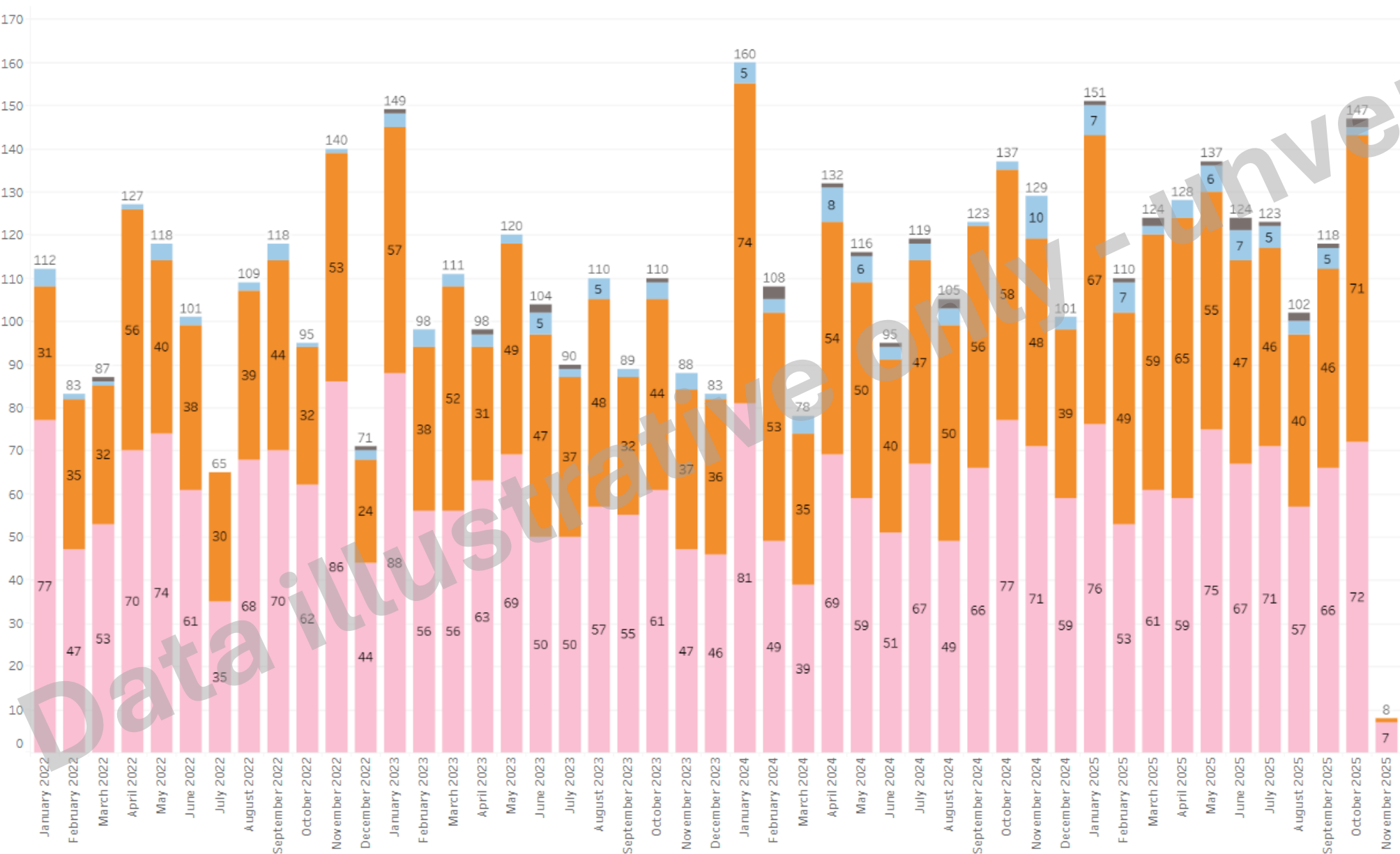
- UAT data
- WIP
- Validation



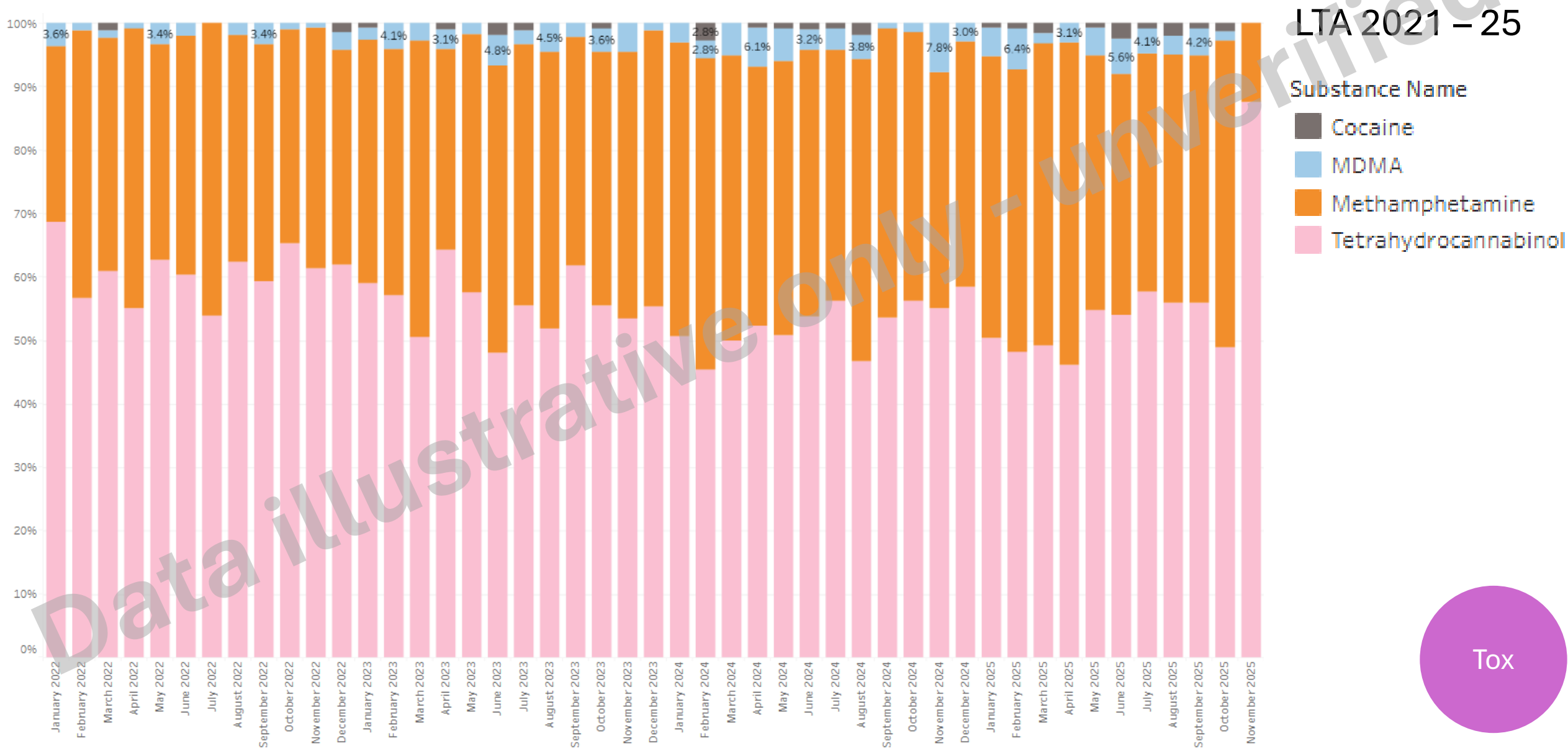
Temporal Drug Trends

LTA - 2021 – 25

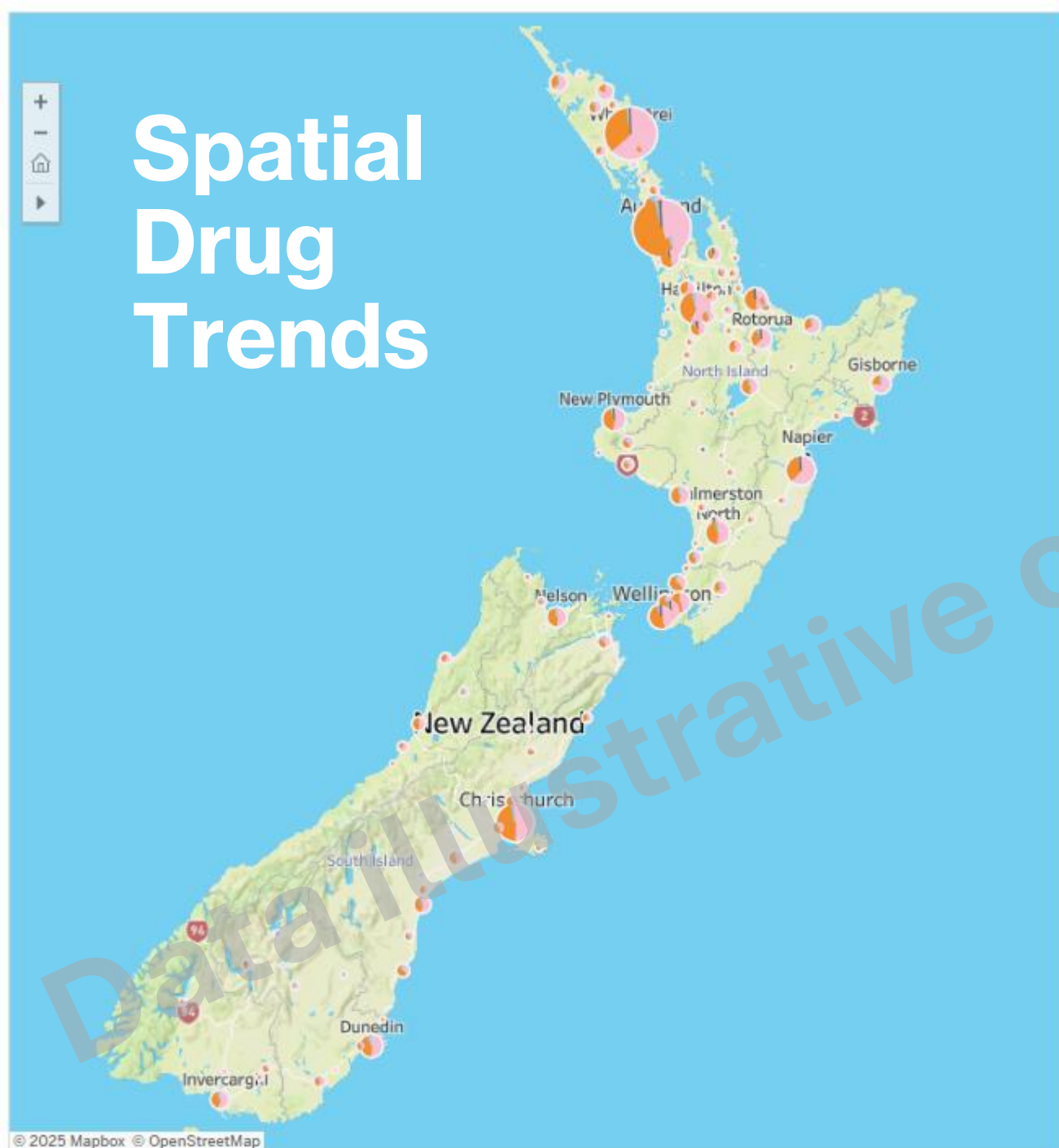
- Substance Name
- Cocaine
 - MDMA
 - Methamphetamine
 - Tetrahydrocannabinol



Temporal Drug Trends

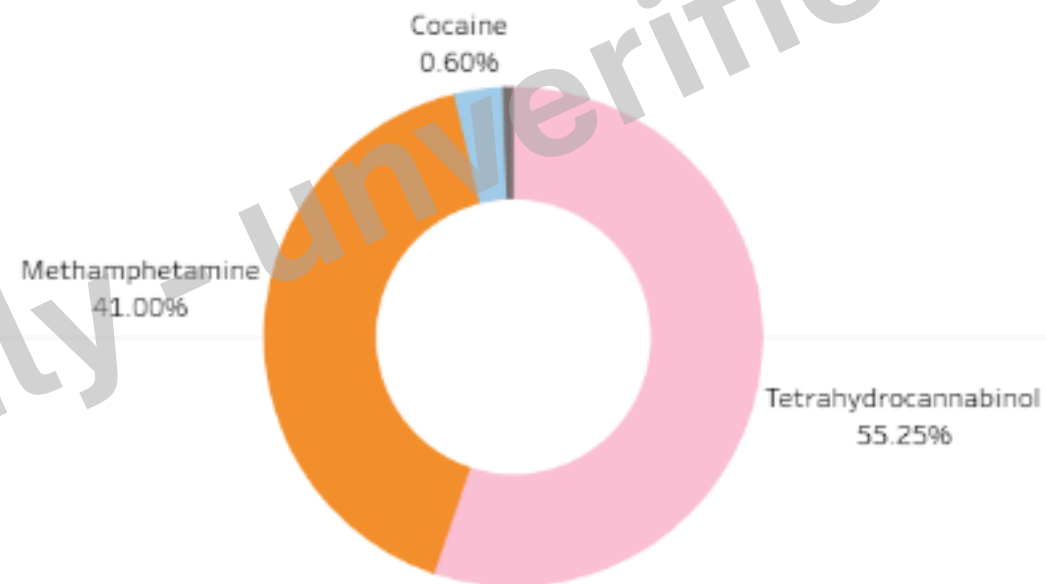


Spatial Drug Trends



LTA 2021 – 25

PHF
Science

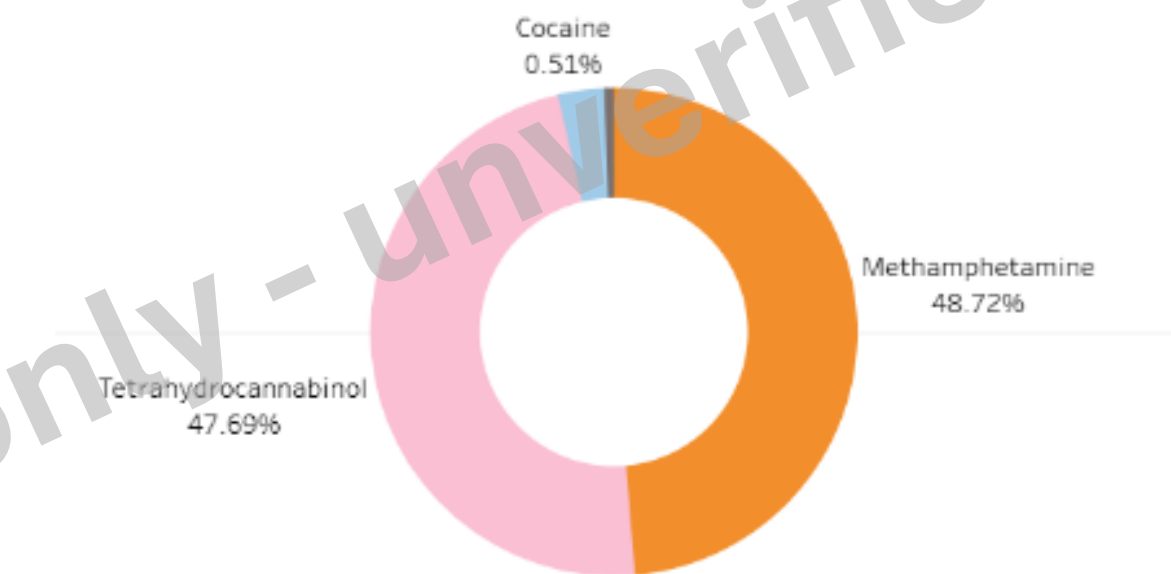


Tox

Spatial Drug Trends



LTA 2021 – 25



Alerts

- Real time internal alerts
- Early Advice – external notifications



UAT Test: New Drug(s) Found

The following new drug(s) were identified in the UAT environment:

Drug Name

Substance: Dibromomescaline

Sample Reference id: 25ESR08405-1

Sample Date: 2025-08-22

Sample Type: Powder

Detected by: Forensic_Drugs_Lab

Substance: Buspirone

Sample Reference id: 25ESR07912-1

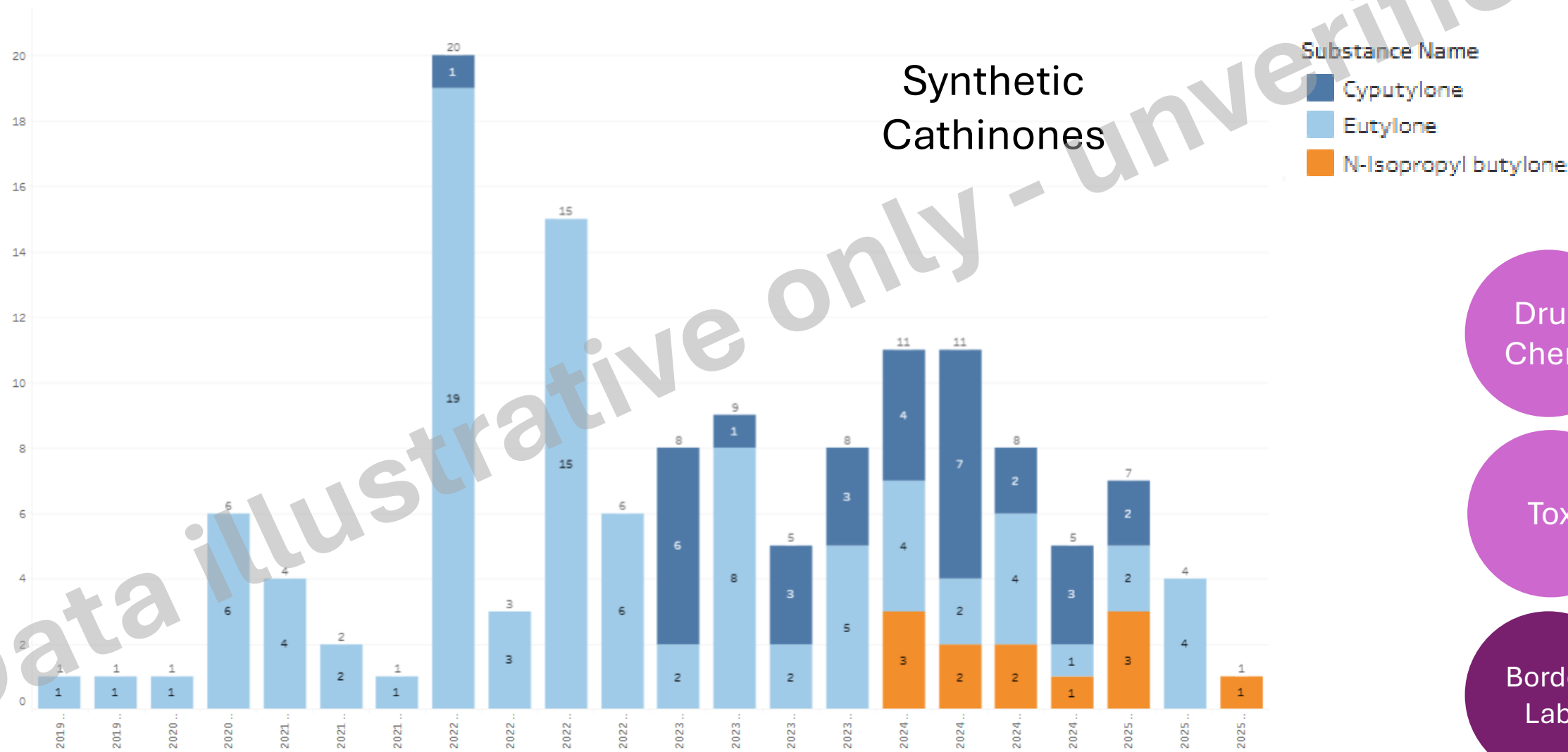
Sample Date: 2025-08-07

Sample Type: Blood

Detected by: Forensic_Toxicology_Lab

Novel Substances

Quarterly, 2019 – 25



Drug Chem

Tox

Border Lab

So what?



- Leverage real-time data
- Enhance rapidly response to potential harm
- Strengthen internal coordination
- Empower external collaborators
- Safer outcomes for Aotearoa communities
- Future development - integrate domestically with external partners and internationally

Acknowledgements



Wendy Popplewell

Wendy.Popplewell@phfscience.nz

IDEAS project group
Business Intelligence Team

